

**LOGIK<sup>®</sup>**  
Forming System



# LOGIK®

## Wall formwork crane-handled

### Description

The LOGIK® panel system for crane handling, produces up to 1670 psf concrete pressure resistance from a strong panel. The panel frames are surface-finished with a hot-dip galvanizing to give longevity and lower maintenance, resulting in reduced costs. Manufactured to tight tolerances, panels are clamped rigidly together with a unique alignment and locking clamp with a single hammer blow.

This action is so secure that form assemblies can then be crane-handled without additional structural members. A large number of re-uses are then feasible without the need for time-consuming stripping down.



### Column forming

Standard panel forms can be used to form tie-less rigid adjustable column forms. Using the LOGIK corner coupler and either 3' or 2' wide panels, a variety of column sizes can be formed from 6" x 6" to 24" x 24" in 2" increments.



**The competitive edge you need**

LOGIK® is the most popular of Harsco Infrastructure’s extensive line of forming systems. LOGIK is a steel-frame, plywood faced, modular craneset system that needs no walers, nuts or bolts. Its labor-saving features provide you with reduced formwork costs and increased productivity.

- **Simple** – only 3 main components: panels, clamps and ties
- **Quick** – installs fast; unique clamping action eliminates stiffening components; large area panels mean fewer pieces to handle
- **Versatile** – can be used on a wide range of wall forming applications

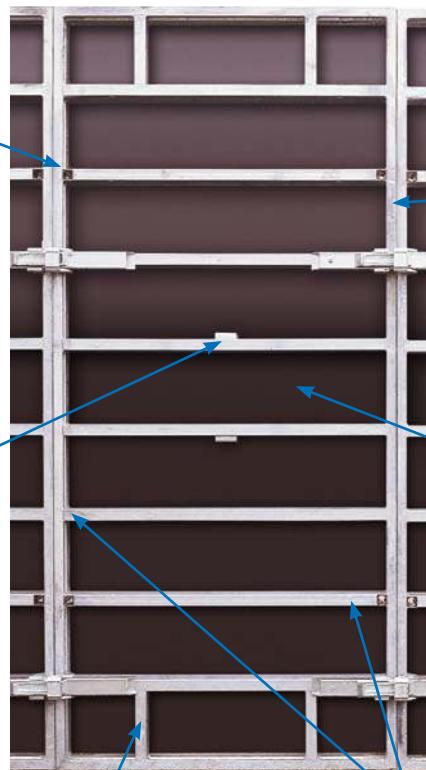


**The LOGIK clamp... all it takes is a hammer blow to align, level and lock**

One hammer blow and the LOGIK clamp aligns and locks the adjacent form panels to provide a fast, simple, solid connection. The unique clamping action eliminates costly stiffening components that other systems require.

**ONE PIECE TIE HOLE**  
Plastic cast design speeds tie setting and stripping. Reduces concrete buildup and maintenance.

**UNIQUE CLAMP STORAGE LUGS**  
Reduce handling by storing connecting clamps directly on gang form.



**HIGH STRENGTH SIDERAILS**  
Special rolled profile protects plywood and provides wide tie spacings.

**DURABLE FORM FACE**  
High face film 3/4" birch plywood with factory-sealed edges gives long life and smooth concrete finish.

**END STIFFENERS**  
Stiffens panel joints and eliminates costly external walers.

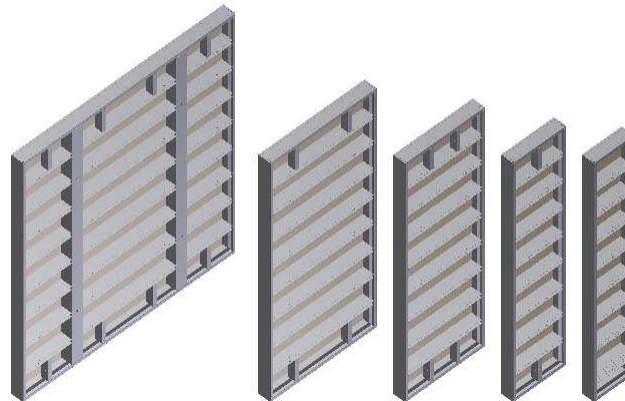
**BRACKET ATTACHMENT HOLES**  
Prelocated in crossmembers and end stiffeners. Provides quick and simple positive connections for accessories.

# LOGIK®

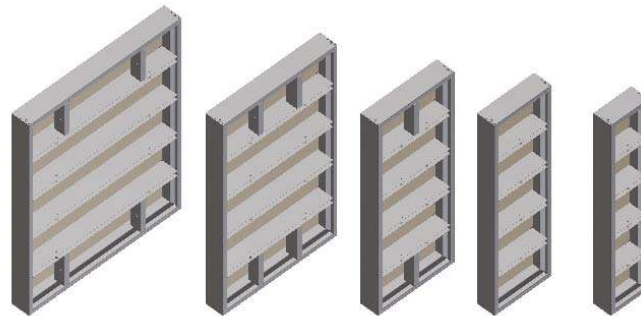
## Wall formwork crane-handled

### LOGIK® Panels

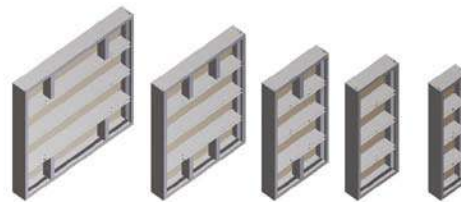
Width ft.-in. (mm)	Part No.	Weight (lbs)
<b>8' 10¼" (2700mm) High</b>		
7' 10½" (2400mm)	LK099600	700
3' 11¼" (1200mm)	LK094800	339
2' 11½" (900mm)	LK093600	264
1' 11½" (600mm)	LK092400	196
1' 5¾" (450mm)	LK091800	155
11¾" (300mm)	LK091200	130
<b>4' 11" (1500mm) High</b>		
3' 11¼" (1200mm)	LK054800	184
2' 11½" (900mm)	LK053600	165
1' 11½" (600mm)	LK052400	120
1' 5¾" (450mm)	LK051800	90
11¾" (300mm)	LK051200	77
<b>3' 11¼" (1200mm) High</b>		
3' 11¼" (1200mm)	LK044800	153
2' 11½" (900mm)	LK043600	139
1' 11½" (600mm)	LK042400	100
1' 5¾" (450mm)	LK041800	74
11¾" (300mm)	LK041200	63
<b>2' 11½" (900mm) High</b>		
3' 11¼" (1200mm)	LK034800	123
2' 11½" (900mm)	LK033600	115
1' 11½" (600mm)	LK032400	82
1' 5¾" (450mm)	LK031800	58
11¾" (300mm)	LK031200	50



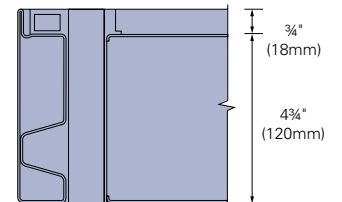
8' 10¼" (2700mm) high LOGIK® panels



4' 11" (1500mm) high LOGIK® panels



3' 11¼" (1200mm) high LOGIK® panels



Cross section through LOGIK® panel



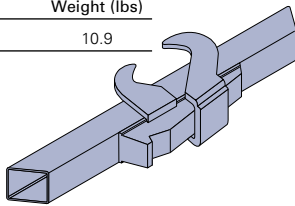
2' 11½" (900mm) high LOGIK® panels

All imperial dimensions are soft conversions.

# LOGIK® Accessories

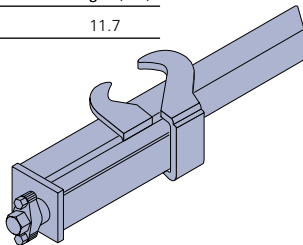
## STANDARD CLAMP

Part No.	Weight (lbs)
LK001090	10.9



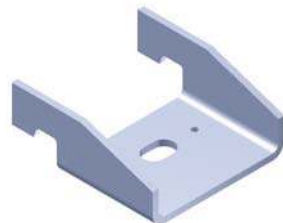
## ADJUSTABLE CLAMP

Part No.	Weight (lbs)
LK001088	11.7



## PILASTER

Part No.	Weight (lbs)
LK050030	197.0

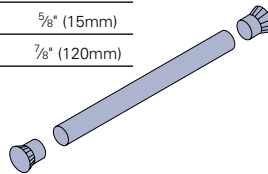


## HOLD DOWN BRACKET

Part No.	Weight (lbs)
LK001098	4.1

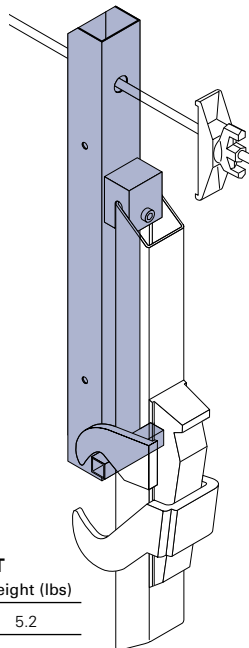
## PLASTIC SPACER CONES

Part No.	Size
HDTM2015	5/8" (15mm)
HDTM2020	7/8" (120mm)



## PLASTIC SLEEVE

Part No.	Size
HDTM2315	5/8" (15mm)
HDTM2315	7/8" (15mm)

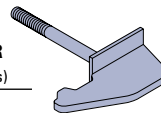


## EXTENSION BRACKET

Part No.	Weight (lbs)
LK001086	5.2

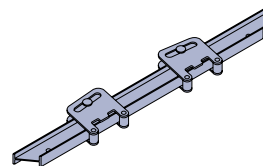
## COLUMN/CORNER COUPLER

Part No.	Weight (lbs)
LK001050	10.0



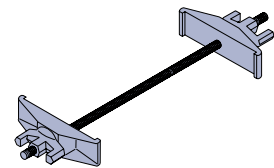
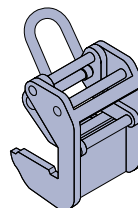
## ALIGNMENT WALERS

Part No.	Size	Weight (lbs)
LK000700	28" (700mm)	13.9
LK001000	39" (1000mm)	16.6



## CRANE LIFT GRAB

Part No.	Weight (lbs)
LK001064	15.2



## TIE PLATE NUT

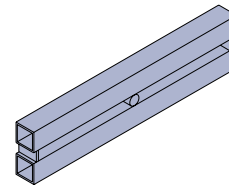
Part No.	Width ft.-in. (mm)	Weight (lbs)
HDTM015	5/8" (15mm)	4.2
HDTM020	7/8" (20mm)	4.4

## TAPER TIE

Part No.	Size	Weight (lbs)
HDT10137	1x7/8x37"	7.9
HDT10145	1x7/8x45"	10.1
HDT10153	1x7/8x53"	12.4
HDT10161	1x7/8x61"	14.6

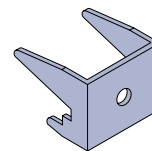
## SHE-BOLT TIE

Part No.	Size	Weight (lbs)
HDT10215	20mm x 15mm x 15.4"	4.2
HDT10219	20mm x 15mm x 19"	4.4



## FILLER TIE CHANNEL

Part No.	Size	Weight (lbs)
LK001124	24" (610mm)	18.9
LK001142	42" (1067mm)	32.2



## DRY TIE BRACKET

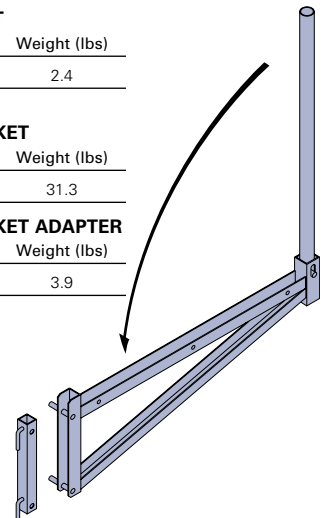
Part No.	Weight (lbs)
LK001048	2.4

## SCAFFOLD BRACKET

Part No.	Weight (lbs)
LK001074	31.3

## SCAFFOLD BRACKET ADAPTER

Part No.	Weight (lbs)
LK001073	3.9



# LOGIK® 360

Wall formwork crane-handled



## LOGIK® 360

LOGIK® 360 is the first plywood-faced truly circular panel formwork system. The patented design of LOGIK 360 demonstrates Harsco Infrastructure's innovative approach to circular formwork. LOGIK 360 has very few components, cutting the chances of site losses to an absolute minimum.

The new design has eliminated the hundreds of bolts, turnbuckles, beams, walers and multiple components commonly used on older systems.

The panels adjust using only four adjusting points and have the ability to adjust from flat to a 12-foot inner radius.



## LOGIK 360

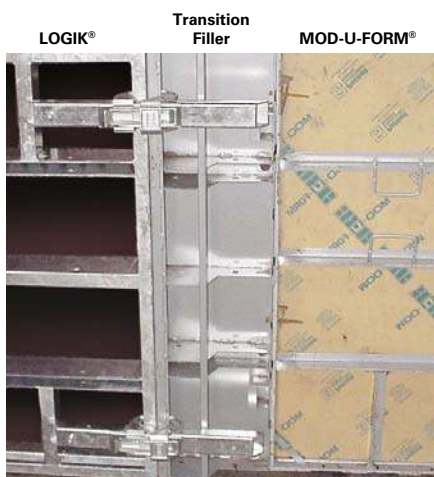
- Truly circular panel formwork system
- Fast and simple setting procedure
- Fully assembled panels
- Lightweight slim profile
- Compatible with LOGIK





## LOGIK® transition fillers

The LOGIK® transition filler makes it easy to join LOGIK with MOD-U-FORM® and STUDFORM® to provide the ultimate in forming productivity and versatility.



**Transition fillers 5' & 4'**  
Enables quick transition to MOD-U-FORM and STUDFORM.



**STUDFORM**  
Utilizes aluminum joists and walers to create any size or shape form. Fully adjustable for a wide variety of tie spacings and finishes. Improves workers' productivity, lowers assembly costs and provides for more efficient use of crane time.



**MOD-U-FORM**  
Highly productive, heavy-duty plywood-faced, steel encased panels offer unlimited versatility in forming structures that can be straight, curved, haunched, round, battered or angled.

#### **Harsco Infrastructure**

A Division of Harsco Corporation  
650 From Road  
Paramus, NJ 07652

Phone: 1-800-969-5600  
Fax: 201-261-5544  
Email: [info@harsco-i.us](mailto:info@harsco-i.us)  
[www.harsco-i.com](http://www.harsco-i.com)

Photos and diagrams are illustrative only. All products and equipment shall be used or offered for sale only where permitted by law or governmental regulations, codes or ordinances and shall be used in strict conformity therewith and for the purposes and in the manner as may be prescribed therein and in conformity with safe practice. Specifications of products and equipment shown herein are subject to change without notice.



## **WARNING**

Serious injury may result if you fail to use safe practice in the erecting, dismantling or use of mast climbing work platforms, scaffolding, shoring and/or forming equipment. Erectors, dismantlers and users must be familiar with and follow current laws and regulations, safe practice and the Safety Rules and Instructions. Individuals using this equipment must be instructed in these requirements. Safety Rules and Instructions pertaining to the products shown herein are provided upon sale or rental of equipment. Additional copies or further information shall be provided upon the customer's request.

It is important to note that current OSHA regulations require the use of guardrail systems and/or fall-protection devices at all working levels, open sides, and at all other openings on platforms and work areas above certain heights, as specified by OSHA. In all cases, where a worker is exposed to a fall hazard in the use of this equipment, guardrail systems, where appropriate, or other personal fall-protection devices, must be utilized. Means of access must be made available by the customer to all locations where people are expected to work. Materials for the provision of such means of access may be job-built by the customer or, at the customer's option, be obtained through Harsco Infrastructure or other suppliers. Harsco Infrastructure will, at the customer's request, consult on an alternative means of access.